



2020



**The
Peninsula
College Fund**

**Annual Report
Fiscal Year 2020**

THE PROBLEM

Only 21% of U.S. low-income, first-generation college students graduate from college in 6 years.*



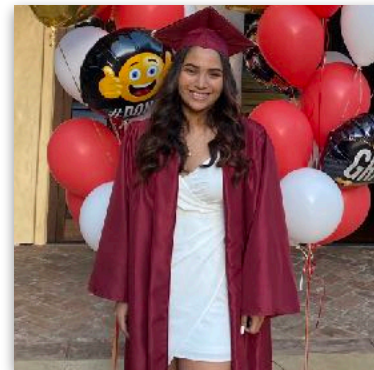
OUR MISSION

Our mission is to empower low-income, first-generation college students to graduate and obtain a job that aligns with their career goals.



OUR VISION

Our vision is to transform lives through college success and entry into rewarding careers. This transformation ripples outward to their families and communities, and inter-generationally, to break the poverty cycle for good.



* Cahalan, Margaret W., Perna, Laura W., Addison, Marisha, Murray, Chelsea, Patel, Pooja R., & Jiang, Nathan. (2020). Indicators of Higher Education Equity in the United States: 2020 Historical Trend Report. Washington, DC: The Pell Institute for the Study of Opportunity in Higher Education, Council for Opportunity in Education (COE), and Alliance for Higher Education and Democracy of the University of Pennsylvania (PennAHEAD).

WHAT DOES THIS REPORT COVER?

Executive Director Letter	1
Success in College	2
Success in Life	3
Scholarships	4
Mentoring	5
Training	6
Internships & Careers	7
Our Response to COVID-19	8
Financials	9
Our Team	10
Our Board	10
Investing in PCF	11
Donors	12-13

Dear Friends,

Wow! What a year it has been. We launched our program year in July 2019 with a three-day College and Career Leadership Conference that was a huge hit with scholars and volunteers alike. For more details on our career services work, please see pages 6 and 7.

In January, we were incredibly excited to ring in the new year. We kicked off the year by celebrating and honoring mentors at a mentor appreciation event. Just as we were getting ready to interview high school seniors interested in becoming part of the 2020 cohort, the pandemic hit.

Our FY20 Annual Report looks and feels different, as the first part of 2020 was like no other year we have faced. Like so many of you, we too had to pivot - from hosting our first virtual Interview Day and Awards Ceremony, to raising dollars for scholar emergency funds, to mitigating the technology gap for PCF Scholars as college courses went online. Program staff not only provided college and career guidance, but they served as students' sounding boards and immediately became aware of health disparities, food insecurities and learning roadblocks amongst our scholars. With partners like you, as donors and mentors, we dispensed emergency funds, laptops, WiFi hotspots, and Safeway gift cards. See page 8 for more about our response to the pandemic.

Though we had to change how we deliver services and shift some of our resources to respond to scholars' immediate needs, our mission remains the same: to empower low-income, first-generation college students to graduate and obtain a job that aligns with their career goals. We are serving more students than ever (over 230 enrolled in college); we received a record number of scholar applications this year (172); the percentage of donors giving this year increased by 33% from the previous year; and volunteers remain engaged (as evidenced by PCF's College and Career Leadership Conference)!

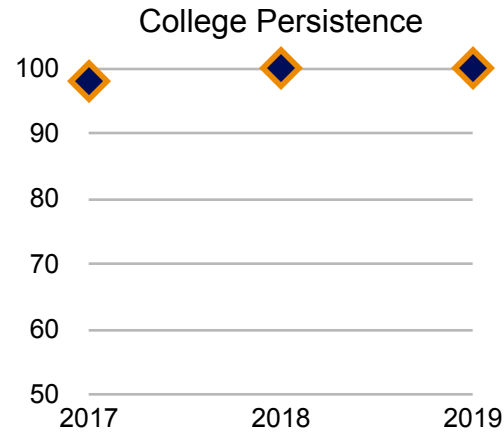
As we enter a new calendar year, I want to thank each and every one of you for your support this past year. It means more now than ever. While I am expecting another challenging year, I take comfort in scholars' resilience, alums' determination, mentors' commitment to scholars, donors' continued generosity, volunteers' time, staff's tenacity, and the board's steadfast support.

Wishing you and your family good health.



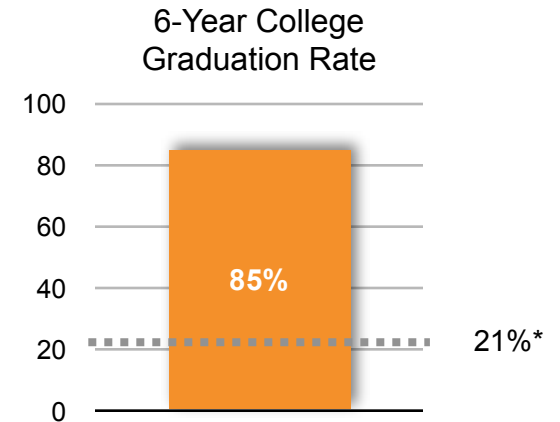
Christina Mireles
Executive Director

SUCCESS IN COLLEGE



This graph represents the college persistence rate for PCF Scholars. For example, of the scholars who entered college in 2017, 98% are still enrolled in college today. Of the scholars who entered college in 2018 and 2019, 100% are still enrolled in college today.

This chart illustrates the six-year graduation rate for PCF Scholars (85%) versus that of low-income, first-generation students nationwide (21%).



* Cahalan, Margaret W., Perna, Laura W., Addison, Marisha, Murray, Chelsea, Patel, Pooja R., & Jiang, Nathan. (2020). Indicators of Higher Education Equity in the United States: 2020 Historical Trend Report. Washington, DC: The Pell Institute for the Study of Opportunity in Higher Education, Council for Opportunity in Education (COE), and Alliance for Higher Education and Democracy of the University of Pennsylvania (PennaHEAD).

SUCCESS IN LIFE

College Majors of the 2020 Graduates

- Applied General Math
- Biology
- Biology & Educational Justice
- Chemistry (Biochemistry)
- Economics
- Human Biology
- Human Development and Health
- Psychology
- Public Health
- Sociology
- Visual Communication Design



"I am embracing life after graduating from college this year. I am currently in a master's program at Claremont University while working full-time as a data analyst. As the first in my family to earn a college degree, I realized that I would need to be very intentional if I were to reach my academic and professional goals. So, I took advantage of every PCF conference and resource that they offered to me. PCF Career Services was a huge part of my professional development as they were able to fill so many of the knowledge gaps I had. What helped me a lot during my many one-on-one sessions was hearing, "You don't need to know what you want to do for the rest of your life right now." Those words from experienced people gave me such comfort and encouraged me to take my time in figuring out what I loved and the paths I might want to consider. I held two internships in college that were also instrumental in helping me figure out what type of career I wanted to pursue, thanks to Career Services resources. While I am busy with my work with my master's program and working full-time in a position that I am passionate about, I am already making a shortlist of schools for Ph.D. programs! One day I plan to come back and volunteer as a PCF mentor so that I can share my experiences to help other scholars like me. I am forever grateful to have been part of a great organization that is so much more than a traditional scholarship program."

- Jose Enrique Corado
B.S. Mathematics
UC Riverside, 2020

"I became a PCF scholar in 2013 eager to start my academic journey with SF State in pursuit of my long-term goal of becoming a Registered Nurse. As an undocumented immigrant and the daughter of a single mother with an elementary school education, my life and my status have brought challenges that have allowed me to grow and learn from my experiences in this country. Working numerous jobs through school to meet my financial needs, living with the Sisters of Social Service in San Francisco to live close to campus, and taking on career-focused internships to get the work experience I needed were all challenges that have shaped me in ways I could not have imagined. My PCF scholarship provided me the opportunity to access career-related resources that were not available at my university as these were invaluable in helping me reach my personal and professional goals. Earning my undergraduate degree, going on to earn my Master of Science in Nursing, and this year securing a position as an RN in the midst of a pandemic, are milestones I am extremely proud of. From leaving my country as a child, to learning English, to accessing higher education, and being a first-generation Latinx college student who learned how to navigate work, academics, extracurricular, and family commitments as I pursued my dreams, I have developed into the strong, resilient, woman that I am today. I can't thank PCF enough for believing in me and helping make my dream a reality!"

- Yarely Guzman Lopez
B.S. Kinesiology, Minor Health Education
M.S. Nursing
San Francisco State University, 2017



SCHOLARSHIPS



Scholarship Funds Awarded
Since PCF's Inception:

\$3.37M

Total Number of Scholarships
Awarded Since PCF's Inception:

391

“I am pursuing a higher education because I want to achieve my goal to become a doctor.”

- Johvanna Garcia
Attended Roberto Cruz Leadership Academy
Attending UC Merced

TRAINING

PCF provides college and career trainings to scholars. Prior to the onset of the pandemic, PCF offered two in-person trainings – a winter training hosted by PricewaterhouseCoopers (PwC) in San Jose and a summer College and Career Leadership Conference. The photos here represent both trainings. During the winter training, PwC employees gave scholars a tour of their beautiful office downtown, met with students one-on-one, provided each scholar tailored feedback on their resume, and shared tips for starting a job search. In July 2019, PCF hosted the College and Career Leadership Conference, which began with three local corporations (Box, LinkedIn, and Sequoia Hospital) hosting scholars for a day. Scholars also participated in workshops such as: Financial Aid and Scholarships; Getting Started with LinkedIn; Tips and Tricks for Time Management; and What to Ask During an Interview. The three-day conference culminated in a Career Exploration Fair with over 40 companies and organizations from Silicon Valley represented and with whom scholars networked.



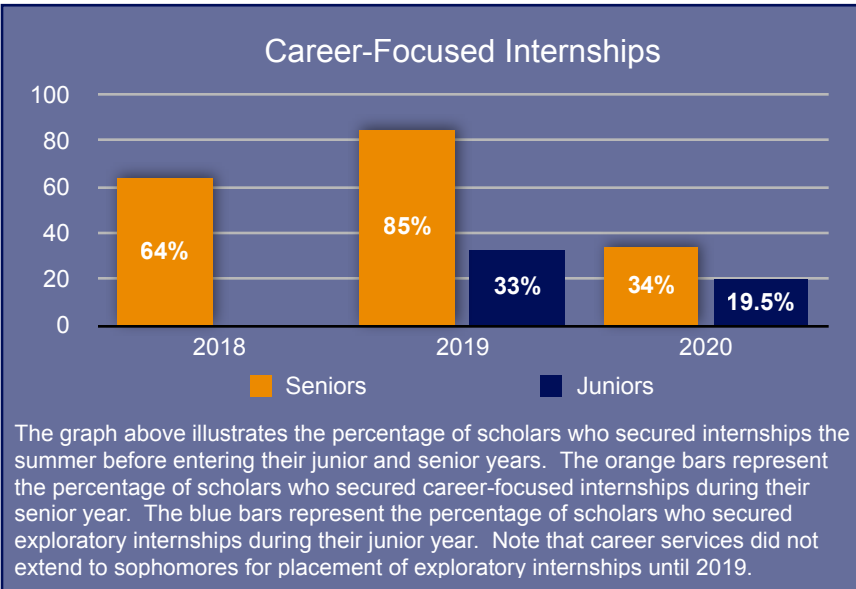
“Having the opportunity to go to Sequoia Hospital on one of the conference days was amazing! Being able to talk with doctors in a variety of disciplines and meeting with the human resources team to learn about what makes their hospital unique was such a great experience for me because while I know I want to be a doctor, I still haven’t decided what field of focus I’m going to pursue.”

- Sophomore Student
San Jose State University

“For us at PwC, having the opportunity to host scholars at our office is important so that students can see first-hand what the professional environment at a Big 4 is like. While students often hear about our Firm, being in our office and interacting with our people in person could motivate them even further to continue in their educational and professional pursuits.”

- Roosevelt Barros
PwC Assurance Director

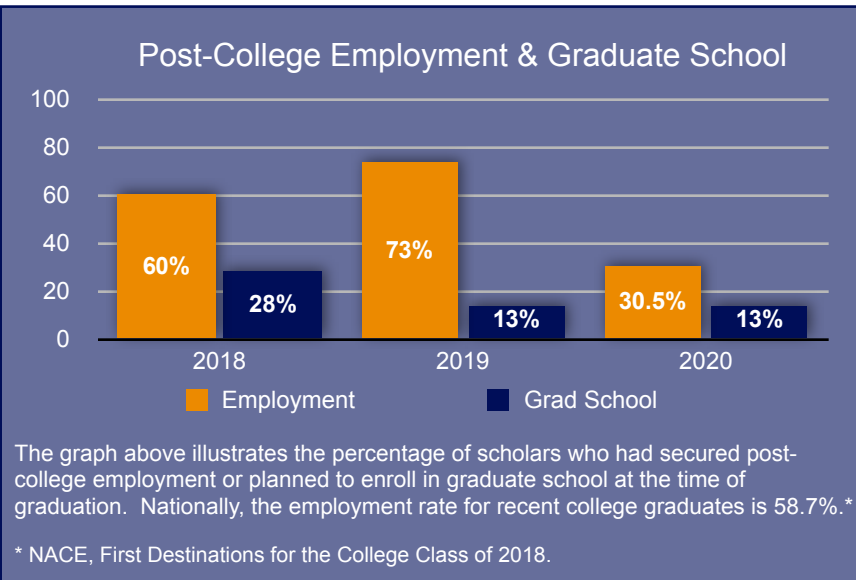
INTERNSHIPS & CAREERS



"I am extremely grateful for the PCF Career Services team because they not only helped me explore various career fields that would utilize my skill set, but also helped me acquire a career-focused internship during my junior year with a company and in a position that I had not considered previously. Interning helped me gain confidence in my abilities and gain insight on what it looks like to work in a corporate environment. I am proud to say that my internship turned into a post-graduation job offer, which I accepted during my senior year. I love working full-time as an HR Assistant at Mercedes-Benz Research & Development, and I am excited to have started my career, even if it's in the midst of a pandemic!"



- Gabriela Perez
B.A. Economics, Cum Laude
UC Riverside, 2020



"I would not be in the position that I am today if it weren't for PCF Career Services. As part of PCF's scholarship requirements, you need to have at least one career-focused internship. I was able to secure three engineering internships with well-respected companies in the construction industry, a field I wanted to pursue after graduation. Through these internships I was able to gain knowledge that you just can't get in the classroom. Having my first two internships with Blach Construction was an invaluable opportunity as it gave me great insights into

the field and the types of positions that are available. These insights led me to my final internship at BKF construction company, which turned into a post-graduation employment offer. I am thankful for all the assistance I received in helping me learn how to interview, follow-up and make the most of each opportunity as these are areas where my family was unable to help me. I am confident that I will have the tools I need to navigate in the real world thanks to the support I have received from PCF! And if I find that I do need additional guidance, I know that PCF's door is always open to me!"

- Angel Hernandez
B.S. Civil Engineering
San Jose State University, 2020

The data for both career-focused internships and post-college employment in 2020 clearly illustrates the pandemic's impact on scholars. This past year, 13 scholars reported that their internship offers were revoked due to COVID-19, while 7 scholars reported that their post-college job offers were revoked due to COVID-19.

OUR RESPONSE TO COVID-19

As low-income, first-generation students, PCF Scholars are incredibly resilient, determined, and resourceful. Yet, unlike their more affluent counterparts, they face a myriad of challenges in pursuing their goals. Unfortunately, when the pandemic hit, these challenges were compounded. Like all college students around the country, PCF Scholars had to abruptly leave their college dorms, return home, and figure out how to juggle familial responsibilities with academic responsibilities. We saw students and their families lose jobs. PCF Scholars lost internships and post-grad jobs. Undocumented students or students from mixed-status families do not have access to government resources. As scholars tried to navigate this new normal, they reported increased levels of anxiety and stress.

Shortly after the pandemic hit, it was evident that we needed to do more. So, we reached out to our community. As a result of our supporters' generosity, we were able to provide the following support:



\$3,000 worth of Safeway gift cards disbursed to 60 students



\$34,900 in emergency funds to 105 students to meet their basic needs (e.g., rent, food, utilities, etc.). Grants ranged from \$250-\$500



Personal use of hotspots so scholars had WiFi access from home/dorm room



Personal Protective Equipment for scholars and their families to safely engage in their local community

As the pandemic continues, we are planning to provide the following support in 2020-21:



Mental health services – As the pandemic continues, scholars' levels of anxiety and stress are increasing



Hotspots – Scholars continue to have a need for consistent WiFi access within the safety and comfort of their own homes



Laptops – Some scholars either do not have reliable devices or they are sharing devices with siblings, making it very difficult to take their college classes online



Emergency Funds – Scholars continue to face challenges meeting their basic needs (e.g., rent, food, utilities, etc.)



Internship/Internship Stipend – Given that scholars have had internship offers revoked as a result of the pandemic, PCF will offer internships/internship stipends so that students can earn funds to support themselves during the pandemic while also gaining valuable skills

While providing emergency funds, reducing the digital divide, and providing mental health services are not services PCF typically provides, we feel it is imperative that we provide scholars with this support now to reduce the likelihood that they will have to drop out of college. Our goal is to keep scholars enrolled in college so that they can obtain a job post-college that provides them with some economic security so that the next time we are faced with a crisis, they will have the ability to not only survive but thrive.

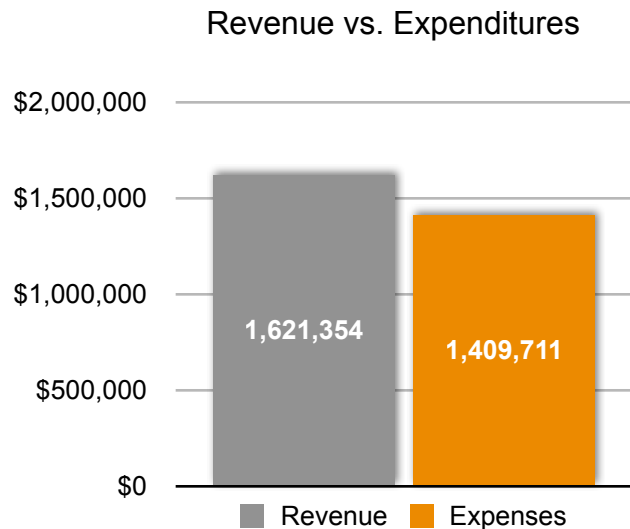
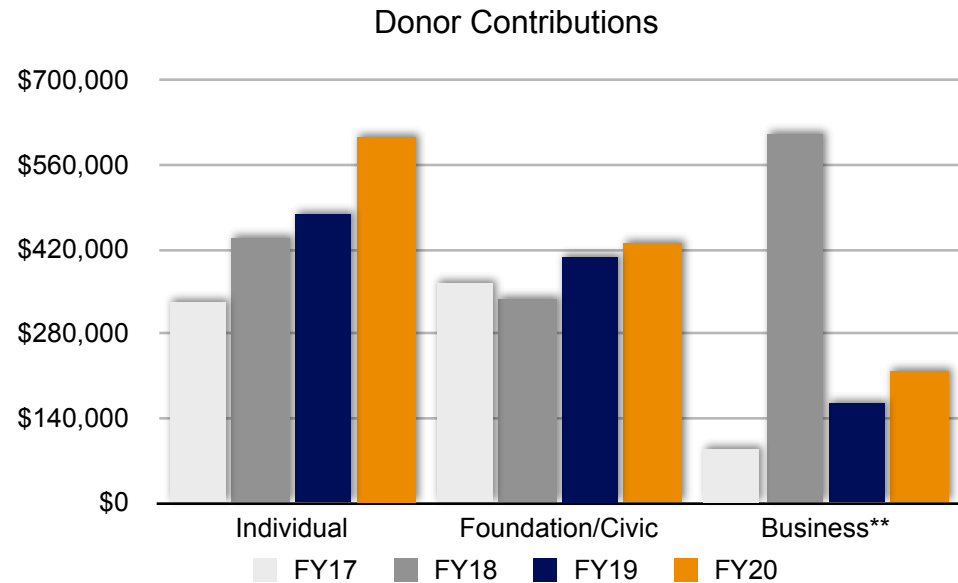
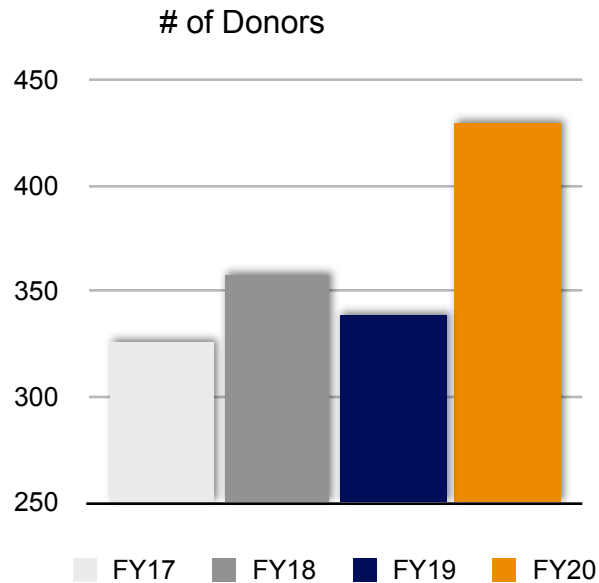
Thank you to our institutional donors!

Redwood City Library Foundation (in-kind)
San Mateo County Strong
Sand Hill Foundation

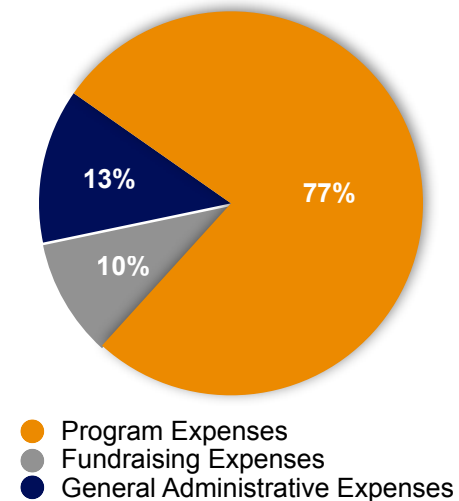
Sares Regis Education & Community Foundation
Silicon Valley Community Foundation
Silicon Valley Council of Nonprofits (in-kind)

Sobrato Family Foundation
The Valley Medical Center Foundation (in-kind)

FINANCIALS (July 1, 2019 - June 30, 2020*)



Operational Expenditures



Note:

* Financial data is provided prior to the completion of the 2020 Financial Statement by our outside accounting firm.

** We gratefully acknowledge a five-year pledge in the amount of \$500,000 from Jay Paul Company, all of which was recorded in FY 2018.

OUR TEAM



L-R Veronica Rueda, Denise Villamil, Rocio Castaneda, Yadira Antonio, Christina Mireles, Izabela Villanueva, Natasha Cook, Natalie Walker, Edher Zamudio and Martha Corral. Staff members hired since this photo was taken in January 2020: Gianina Luna, Lianne Aratea, Vanessa Magaña

OUR BOARD

Charles Schmuck
Founder

W. Scott Lohmann
President

Eric Hartwig
Vice President

Pat Clements
Treasurer

Karen Canty
Secretary

Bob Couch

Dani Gasparini

Hanna George

Asha Guha

Lydia Kearney

Elisabeth Magaña

Paul Magliaro

Michael Pope

Jamie Sandoval

Charles Schaff

Erica Torres

Jo Volkert

Hernan Bucheli
Board Member Emeritus

Phil Ekedahl
Board Member Emeritus

INVESTING IN PCF

This year has been tough for everyone, but especially for scholars. Scholars need you now more than ever. As you read earlier in this report, PCF has been providing scholars with COVID-19 relief in addition to its core services. PCF cannot do any of this work without your support. Dedicated volunteers and financial resources are critical to the success of PCF Scholars. Your time, talent, and treasure will help us to continue supporting scholars through these difficult times and will get scholars one step closer to college graduation, meaningful post-graduation jobs, and financial security.

EVERYONE CAN GIVE!

GIVE TIME – Volunteer as a mentor. Provide advice, support, information, role modeling, and networking opportunities to our talented scholars.

GIVE TALENT – Share your expertise with our scholars by assisting our staff during College & Career Success Workshops. Your insights on career-related topics such as networking, interviewing, career selection and academic preparation can add immeasurably to their ability to define and reach their goals.

GIVE OPPORTUNITY – Offer a career-focused summer internship in your workplace. Share your network for informational interviews and potential internship experiences.

GIVE GENEROUSLY!

- ♦ \$50 Helps defray the cost of dorm life
- ♦ \$100 Helps towards purchasing textbooks
- ♦ \$250 Funds scholar networking events
- ♦ \$500 Funds attendance for 1 scholar at the College and Career Leadership Conference
- ♦ \$1,000 Funds attendance for 2 scholars at the College and Career Leadership Conference
- ♦ \$1,500 Provides a career-ladder internship stipend
- ♦ \$3,000 Funds one year of a four-year \$12,000 scholarship
- ♦ \$6,000 Sponsors wrap-around programs and scholarship for a scholar for 1 year

JOIN PCF'S SCHOLARSHIP CIRCLE!

A 4-year pledge of \$500 up to \$6,000-a-year directly adds to our capacity to add new scholars in spring 2021. Named scholarships are at the \$3,000-a-year plus level. Join this growing group for greatest impact. Email our Development Director, Natalie Walker, for a brochure about the Scholarship Circle at natalie@peninsulacollegefund.org or call 650-249-7754.



As a partner with The Peninsula College Fund over the past several years, I have been so tremendously proud of both the program that they have crafted and the way the organization has supported their scholars. Financial aid alone cannot solve the systemic inequities built into our system of education. As I became more aware of my embedded privileges as I grew older, it became clearer

to me that there were important unspoken factors that helped me to succeed in college; factors that I had failed to fully appreciate when I was a student myself. I realized the importance of being able to tap into institutional knowledge in order to navigate difficult aspects of college. I recognized the significance of receiving mentorship and guidance when I hit stumbling blocks, and the ability to quickly develop a network and find employment soon after I graduated. That is why I am so honored to work closely with The Peninsula College Fund, an organization that understands – fundamentally – how to support students through these unspoken, though critically important, challenges. By providing scholarships, mentorship, training, and internships, PCF adopts the most effective type of approach to supporting first-gen students to meet the challenges of college; a holistic one. The exceptional rates of success experienced by PCF Scholars are why I have, and will continue, to give to this worthy cause well into the future. I certainly would encourage any who are interested to join with me in supporting the work of this wonderful organization!

- John Matthew Sobrato
Sobrato Family Foundation

DONORS (July 1, 2019 - June 30, 2020)

BUSINESSES

Donors \$100,000+

Facebook ✱
Jay Paul Company ✱

Donors \$20,000+

Anonymous

Donors \$5,000+

Blach Construction
Cisco
Harmony Capital LLC
Morgan Stanley

Donors \$2,000+

Adams and Taylor
Dodge and Cox ✱
Ernst & Young LLP
GreyStar LLC
Heritage Bank
Howell Electric, Inc
Landmark Builders
One Workplace
Market One Builders
Samaritan Medical Center

Donors \$1,000+

Bingham, Osborn & Scarborough
Excite Credit Union
DES Architects and Engineers
SBM Fitness Inc
Wealth Architects

Donors up to \$1,000

AmazonSmile
Haas and Associates LLP
Kepler's Books
LinkedIn
Palo Alto Networks

Employee Matching Gifts

Adobe Matching Gifts
Applied Materials Matching Gift
Apple Matching Gifts Program
Fremont Group
Google Matching Gifts
Intel Matching Gifts
Intuit
Medtronic
Palo Alto Networks
Oracle
Visa Matching Gift Program
Varian Medical Systems

CIVIC ORGANIZATIONS & FOUNDATIONS

Donors \$200,000+

Abby Sobrato Scholarship Fund ✱

Donors \$100,000+

Ranzetta Family Fund ✱
Harvey L. & Maud C. Sorensen
Foundation

Donors \$30,000+

The O'Donnell Foundation
Sand Hill Scholar Fund ✱
Sand Hill Foundation
Silicon Valley Community Foundation

Donors \$10,000+

Rotary Club of Menlo Park ✱
Shortino Family Foundation
Sobrato Family Foundation
Westly Foundation

Donors \$5,000+

Gasparini-Beals Foundation
Hopper-Dean Foundation
Palo Alto University Rotary Club
Lantern League
Myrtle Atkinson Foundation
Palo Alto Weekly Holiday Fund
Sares Regis Education and Community
Foundation

Donors up to \$3,500

Benefraim-Rodrigues Foundation ✱
Bright Funds Foundation
Goodstein Foundation
Harbor Lights Foundation

IN-KIND DONORS

Mike Blach
Karen and Ed Cauty
Mark Cator
Phil Ekedahl
Dani Gasparini and Alyn Beals
Francisco Jimenez
Olya Krasnykh
Vivian Lufkin
Cara Magliaro
Tim McGee
Pacific Art League
BR Printers
Redwood City Library Foundation
Jose Luis Rueda
Evy Schiffman
Silicon Valley Council of Nonprofits
Sobrato Family Foundation
Cliff Tedder
The Valley Medical Center Foundation

Jo and John Volkert

INDIVIDUALS

Donors \$25,000+

B.J. and Isabel Cassin ✱
B.J. Cassin Conservator for Robert Cassin ✱
Susanne and Irving Grousbeck ✱
Matt and Lisa Sonsini ✱
John A. Sobrato

Donors \$10,000+

Jonathan Brandt
Rich and Carlee Brown ✱
Susan Bullis ✱
Hanna George
Mary and Richard Haughey ✱
Mudita Jain and Vineet Gupta ✱
Lydia and Richard Kearney ✱
Joan Lane
Lydia and Thomas Moran
Evy Schiffman
Pen and Mary Alice Tudor Scholarship ✱

Donors \$5,000+

Arunashree and Ram Bhamidipati ✱ ✱
Mike Blach ✱ ✱
Laszlo and Gerri Bock
Anna Briggs ✱
Tim and Patricia Daniels ✱
Asha and RV Guha
Paula Larson Scholarship ✱
Grant and Jeannette Heidrich
Peter W. and Leslie London ✱
Paul and Cara Magliaro
John O'Donnell and Therese Post
Michelle Oates and Peter Detkin ✱
Michael and Victoria Pope ✱
Jesse and Nicole Chubb Ralston ✱
Woody and Denise Shackleton ✱
Jaya and Raj Subramanian ✱

Donors \$2,500+

Manuel and Maria Alba-Marquez ✱
Steve and Joy Atwell
Phil Bachler ✱
Eric Benhamou
John and Amy Boyle
Karen and Ed Cauty ✱
John Corcoran
Ross Darwin ✱ ✱
Kevin Dausch
Carol Dressler
Janet Ehrhardt
Doon Family Fund ✱ ✱
Linda Garvey ✱
Elaine and Eric Hahn
Eric and Krista Hanson
Eric and Deborah Hartwig

Georgiana Hays
Joseph Hogan
Lara Hoyem
Kevin Lee and Michelle Wong
Ellen McNeil ✱
Samuel Medrano ✱
Michael and Karla Mohrman
Kathy and Peter Muller ✱
Anne and Larry Parks
Larry Pelzner
Charles Schaff ✱
Charles Schmuck ✱
Jo and John Volkert ✱

Donors \$1,000+

D.E. Adams ✱
Anthony and Bonnie Addario ✱
Todd Adler ✱
Steve and Bonnie Anderson
Anonymous
Dennis Austin
Alpio Barbara
David Barca
Frank Bartolo
Bobbi Batchelder
Greg Betty
Rooney Blach ✱
Donald Blach
Karen Bliss
Mark Cator ✱
G. Thomas Cator LLC
Curtis Cook
Mary and Tom Cooper ✱
Patti Crisafi
Terry and Kathy Duryea ✱
Mary Fitzgerald ✱
Steven and Cheryl Fong ✱
Tara Fowler
M.A. Harvey
Mike and Julie Hawkes
Barry Hills
Drew Hoffman and Emily Wu
Louise Husin and Dror Shimshowitz
Patricia and David Jacobson ✱
Jeff Jennings
Soroush and Niloo Kaboli
Dustin Kanode
Mindy Kirkpatrick
Michele and Steven Kirsch
Patrick Love
Vivian Lufkin ✱
Robert Matschullat
Scott Morey ✱
James Naylor
Jane Nettessheim
Janine O'Flaherty
John and Nancy Ottoboni
Scott Rash

Mark and Lisa Rosenthal ✱
Gail Schulze ✱ ✱
Paul Schumacher
Schweitzer-Schramm Fund
Roger Schwab
Shirley Sparks and Dick Greif ✱
Lucile Spurlock
Erica Torres
Beth Tudor

Donors \$500+

David and Carolyn Anderson
Marjory Barkhau
Robert and Jo Benson ✱
Paul Bertoldo
Frank and Gayle Boitano
Laura Bold
Marshall Burgamy ✱
Stephen Cadigan
Pat and Paulette Clements
Colleen Devlin ✱ ✱
Rick DiNapoli
Kenneth Fadner
Garrison and Ann Fathman
Yvonne French ✱
Thomas Furey
Vic Giacalone
Cynthia Gilkey
Judith Greig
Christine Hatton ✱
Carol Henton ✱
Leonard Heymann
Ken Howell
Anthony Hoyt
Joseph Hurd and Christina Mireles
Ken Hurley
Dianne Edmonds and David Jaques
Andy Jeffrey
Dean Johnson
Mark and Samantha Johnsen
Rebecca Jones
Tim Kelly ✱
Matthew and Ashley Kilmartin
Gregory Klein
Mark Knox
Tony Lautmann
Janet Littlefield
Scott and Lisa Lohmann
Watson Lohmann
John Mahoney
Barry Mangan
Michael Moore
Annelise Mora ✱
Tyler Needman
Jordan Park
Andrea Parks
Andres and Renee Pech
Linda and Joseph Pfahnl

DONORS (cont'd)

John Pimentel
 Mark and Betsy Rosen ☆
 Julie Schatz
 Jim Scheinman
 Todd Schwartz
 Karen Skurnac
 Lauren and Kirk Swezey
 Dr. Wayneab Truneh
 Anne Van Camp
 Jeff and Sharyn Vucinich
 Gary and Donna Wada ☆
 Celia Walker
 Bob Walker
 Beth-Ann Wenger
 Jess Wible
 Brett Wingo
 Cynthia Wordell
 Kristine Zavoli

Donors \$250+

Tiffany Choy
 Michael Gibbons
 Robert Haeusslein
 Mary Helen Armstrong
 Karrie Holm ☆
 Dr. and Mrs. Joseph Hurd
 Joyce Johnsen
 Julie and James Leach
 Laurence Lemaire ☆
 Warren Long and Susan Lake ☆
 Mims Munro
 Susan Petit
 Lorraine Reno and Thomas Holdman
 Nkia and Damon Richardson
 Lissette Valadez *
 Juan Verde
 Jim and Sharon Walker
 Jackie Walker ☆
 Elizabeth Wolf

Donors up to \$250

Anusasananan Family Trust
 Pierre Abdel-Malek *
 Michael Abrahams
 Alexis Aceves *
 William Adams
 Jim Baker
 Debi Baltramo
 Donna Becht

Sanjin Bicanic
 Joseph Braun
 Katherine and James Burt
 Shayla Bunch *
 Raenna Caguioa
 Albert Camarillo
 Suzanne Campbell
 Gail Cannis
 Christopher Carper
 Margie Carrington
 James and Marlyn Carson
 Manny Castro *
 Kathy Cauha
 Jenny Cheng
 Niccolina Clements
 Karen Coleman
 Nancy Collins
 Paul Comita
 Bob Couch
 Geri Crane
 Gloria Cruz ☆
 Les DeWitt
 Ann Dolan
 Peggy Dong
 Sean Dowdall
 William and Sharon Drake
 Phil and Maureen Ekedahl
 Tania Escobar
 Gary and Mary Ellison
 Martin Farfan ☆
 Sandra Ferrando
 Edward Flank
 Christine Fleming
 Neysa Fligor
 Howard Fortner
 Jim and Judy Foudy
 Hayden Frank
 Erika Frederick
 Tamara Free
 Gina Fridley
 Benjamin Frommer
 Kathy Gallagher
 Katherine Garcia *
 Don Gibson
 Bob Gilmartin
 Margaret and Peter Goldsmith
 Marisol Gomez * ☆
 Gricelda Gonzalez
 Jessica Gonzalez * ☆

William Gould
 Barbara Grasseschi
 Jon Graves
 Indiana Gregg
 Laura Grochowina
 Javier Guzman *
 Laura Gwosden
 Susan Hailey
 Kenneth and Deanne Hammer
 Stella Hanis
 John Heil
 Jessica Herrera-Flanigan
 Peggy Hock-McCalley
 Barbara Hubler
 Tomas and Nova Jimenez
 Catherine Jones
 Bill Jones
 Diane Julien
 Songwoo Kang
 Kathy Kau
 Steve Ketchpel
 Cleopatra Kiros
 Alice Kleeman
 Tara and Matt Komar
 Jamie Kresberg
 Margaret Krome ☆
 David Landis
 Ana Lara * ☆
 Stephanie Lau-Chen
 Karina Lira Nunez *
 Lenore Lovoi
 Karen Lucian
 Wayne Lukaris
 Jeremy Lyon
 Jackie and Bob MacDonald
 Karina Macias Sandoval
 Tom and Barbara Mack
 Elisabeth Magaña *
 Carol Marks ☆
 Nancy Marsh
 Dr. Mallika Marshall and Jason Hurd
 Aidan Martinez
 Wallace and Geraldine Miller
 Jim McCahon
 Marc McMahan
 Sandra McNabb and David Loughhead ☆
 Ellen Melton
 Aian Mendoza
 Wallace Mersereau

Brian Miller
 Tony Mirenda
 Nancy and Victor Mitnick
 Gail Mohr
 Magali Molina *
 Jocelyn Morales *
 Jessica Morgan
 Catherine Morris
 Ricardo Munguia
 Susan Munne ☆
 Marcia Murray
 Jennifer Mutch
 Kuulei Naipo
 Maxine Nesbitt
 Dwight Nickerson
 Hahn Anthony Nguyen
 Miriam Noriega Diaz * ☆
 Gigi Nunes
 Lori Obermeyer
 Joel Onodera
 Erik Ortega *
 Brenda Ortiz
 Tiffany Palomar *
 Grace Pedersen
 Natasha Pereira-Kamath
 Brian Perkins
 Dr. Shanti Perkins
 Jakari Perry *
 Thomas Perry
 Lisa Phelan
 Ronnie Plasters ☆
 Libbie Prescott
 Eric Ramirez *
 Jennice Redeker
 Lynn Reed
 William Rice
 Daniel Rich and Abigail Dorosin
 Carol and Jon Richards
 Sefora Rios *
 Lou Ann Roberts
 Caroline Robinson ☆
 Javier Rodriguez *
 Irma Romero
 Michelle Romero
 Susan Russell
 Jamie Sandoval
 Giselle Schmitz
 Tiffany Silva
 Susan Simms

Samuel Smalls
 Susan Stephan
 Linda Stevenin
 Peter Stilwell
 Alexis Straiten *
 Joyce Strauss ☆
 Theresa Strickland ☆
 Liz Sullinger
 Susan Swensson
 Cynthia Tapia
 Clifford Tedder
 Jeanette Telesky
 Lawrence Terry
 Laura Teutschel
 Tom and Rosemary Tisch
 Mary and Michael Thomas
 Amy Thornborrow
 Barry Thornton
 Jose Torres *
 Laura Tovar *
 Thuong Tran
 Louise Tsoi
 Catalina Valencia
 Toby Valk
 Leslie Vasquez ☆
 Jessica Vazquez ☆ *
 Lisa Walton ☆
 Robert Weiss ☆
 Darrell Wicker
 Michael Yang
 Michael Yudell
 Roberta Zarea
 Gerald Zon

Scholarship Circle Donors

* Founder's Circle (\$6,000+ for 4 years)
 * Scholar Circle (\$3,000+ for 4 years)

* Leadership Circle (\$1,000+ for 4 years)
 * Donor Circle (\$500+ for 4 years)

* Alumni
 ☆ Mentor

We made every effort to create an accurate list of our FY20 donors. Please contact Natalie Walker, natalie@peninsulacollegefund.org, for any errors or omissions, with our sincere regrets.

Partner High Schools
PCF Scholars come from these twenty-two high schools



Alpha Cindy Avitia High School



Carlmont High School



Cristo Rey San Jose Jesuit High School



Downtown College Preparatory - Alum Rock



East Palo Alto Academy



Eastside College Preparatory School



Gunn High School



Junipero Serra High School



Latino College Preparatory Academy



Luis Valdez Leadership Academy



Menlo-Atherton High School



Menlo School



Mt. Pleasant High School



Palo Alto High School



Roberto Cruz Leadership Academy



Sacred Heart Preparatory



Saint Francis High School



San Jose High School



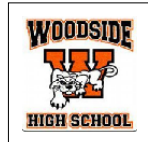
Sequoia High School



Summit Preparatory High School



William C. Overfelt High School



Woodside High School



Sobrato Center for Nonprofits
526 Valley Way
Milpitas, CA 95035

info@peninsulacollegefund.org
(650) 779-5000

501(c)(3) Nonprofit Tax ID# 26-4293269

Follow us!

